

featuring **MATCHMADE** COLLECTION BY PAT BRAVO

SOULMATES



X
X
X
X
X
X
X
X
X
X
X
X
X
X
X
X

FREE PATTERN

XXXXXXXXXXXXXXXXXXXXXXXXXXXXXXXXXXXX





SOULMATES

QUILT DESIGNED BY PAT BRAVO

«Matchmade»

FABRICS DESIGNED BY PAT BRAVO



TO BERRY



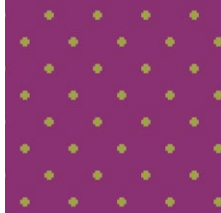
MTM-9100
INDICATION BERRY



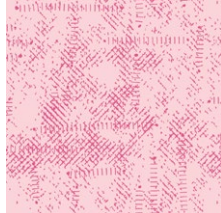
MTM-9101
THOUGHTS BERRY



MTM-9102
QUARTZ BERRY

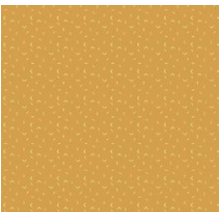


MTM-9103
POSITIVITY



MTM-9104
EXPRESSIONS BERRY

TO GOLD



MTM-9200
INDICATION GOLD



MTM-9201
THOUGHTS GOLD



MTM-9202
QUARTZ GOLD



MTM-9203
POSITIVITY GOLD



MTM-9204
EXPRESSIONS GOLD

TO FOLIAGE



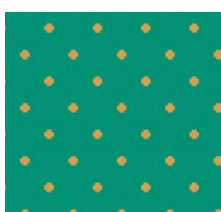
MTM-9300
INDICATION FOLIAGE



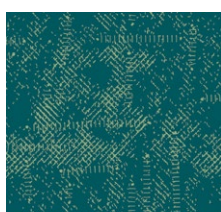
MTM-9301
THOUGHTS FOLIAGE



MTM-9302
QUARTZ FOLIAGE

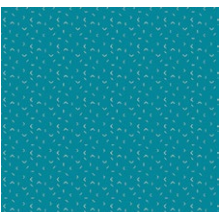


MTM-9303
POSITIVITY FOLIAGE



MTM-9304
EXPRESSIONS FOLIAGE

TO MIDNIGHT



MTM-9400
INDICATION MIDNIGHT



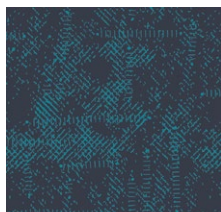
MTM-9401
THOUGHTS MIDNIGHT



MTM-9402
QUARTZ MIDNIGHT



MTM-9403
POSITIVITY MIDNIGHT



MTM-9404
EXPRESSIONS MIDNIGHT



SOULMATES

FINISHED SIZE | 60" x 60"

FABRIC REQUIREMENTS

Fabric A	MTM-9102	3/8 yd.
Fabric B	MTM-9103	3/8 yd.
Fabric C	MTM-9200	5/8 yd.
Fabric D	MTM-9201	3/8 yd.
Fabric E	MTM-9404	3/4 yd.
Fabric F	MTM-9301	5/8 yd.
Fabric G	MTM-9303	3/8 yd.
Fabric H	MTM-9400	3/8 yd.
Fabric I	MTM-9204	1/8 yd.
Fabric J	MTM-9101	3/4 yd.
Fabric K	PE-413	3 yds.
Fabric L	MTM-9100	3/8 yd.

BACKING FABRIC

MTM-9101 3 1/2 yds. *(suggested)*

BINDING FABRIC

MTM-9100 (Fabric L) *(included)*

CUTTING DIRECTIONS

1/4" seam allowances are included.
WOF means width of fabric.

- Sixteen (16) 2 1/8" x 5" rectangle from Fabrics **A, B, D, G, H**
- Sixteen (16) 1 3/4" x 2 1/8" rectangle from Fabrics **A, B, D, G, H**
- Four (4) 2 3/4" x 1 5/8" rectangle from Fabrics **A, B, D, G, H**
- Four (4) 1 5/8" x 5" rectangle from Fabrics **A, B, D, G, H**
- Eight (8) 3 3/8" x 3 3/8" square from Fabrics **A, B, D, G, H**
- Twenty four (24) 2 1/8" x 5" rectangle from Fabrics **C, F**
- Twenty Four (24) 1 3/4" x 2 1/8" rectangle from Fabrics **C, F**
- Six (6) 2 3/4" x 1 5/8" rectangle from Fabrics **C, F**

- Thirty Two (32) 2 1/8" x 5" rectangle from Fabrics **E, J**
- Thirty Two (32) 1 3/4" x 2 1/8" rectangle from Fabrics **E, J**
- Eight (8) 2 3/4" x 1 5/8" rectangle from Fabrics **E, J**
- Eight (8) 1 5/8" x 5" rectangle from Fabrics **E, J**
- Sixteen (16) 3 3/8" x 3 3/8" square from Fabrics **E, J**
- One (1) 1 5/8" x WOF strip from Fabrics **I**
- Six (6) 1 5/8" x 1 5/8" squares from Fabric **J**
- Ninety Six (96) 1 3/4" x 1 3/4" square from Fabric **K**
- Twenty Four (24) 2 3/4" x 2 3/4" square from Fabric **K**
- Ninety Six (96) 2 3/4" x 5" rectangle from Fabric **K**
- Ninety Six (96) 3 3/8" x 3 3/8" square from Fabric **K**
- Two (2) 14" x WOF rectangle from Fabric **K**
- Six (6) 1 5/8" x 14" strip from Fabric **K**
- Twenty four (24) 1 5/8" x 14" strip from Fabric **K**

CONSTRUCTION

Sew all rights sides together with 1/4" seam allowance.

- Start with the construction of the HST's
- To accomplish the HST construction take the 3 3/8" squares from fabrics **A, B, C, D, E, F, G, H, J** and **K**.
- Using a water-soluble marker, mark a diagonal line across the wrong side of all **K** squares.

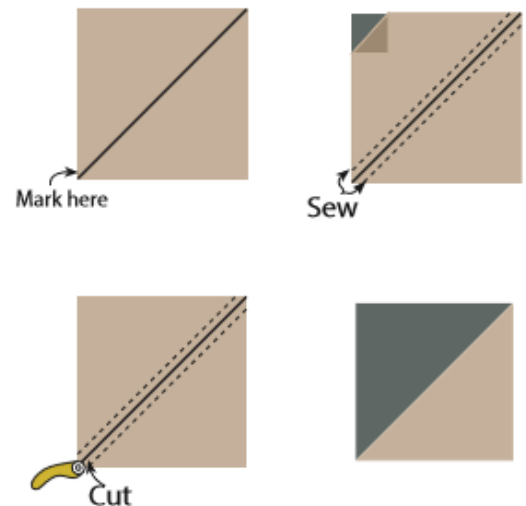


DIAGRAM 1

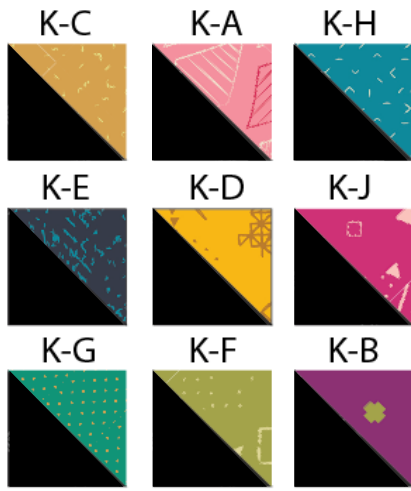


DIAGRAM 2

- Pair one **K** square right sides together with each of the squares from the other fabrics.
- Sew $\frac{1}{4}$ " on both sides of the marked line.
- Cut piece in half along the drawn line. Press seams open and trim half-square triangles into a $2\frac{3}{4}$ " square.
- You will have the following amount of HST for the following fabrics:

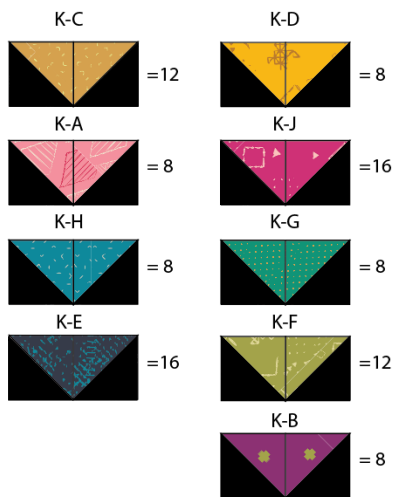


DIAGRAM 3

- Sew together two HST (in the same fabric combinations) as shown in diagram 3.
- Sew the HST to the Fabric K $2\frac{3}{4}$ " x 5" strips as shown. These will be used in the main 9-Patch blocks.

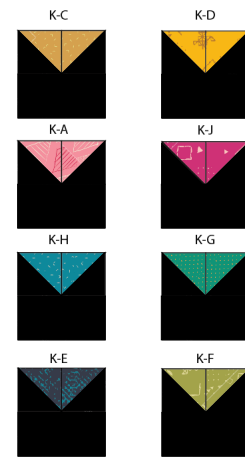


DIAGRAM 4

- Take (2) $2\frac{3}{4}$ " x $1\frac{1}{2}$ " rectangle from Fabric **A**, and (1) $2\frac{3}{4}$ " x $2\frac{3}{4}$ " from Fabric **K** and pair one rectangle on the top and one on the bottom of Fabric **K**



DIAGRAM 5

- Take (2) $1\frac{1}{2}$ " x 5" rectangles from Fabric **A** and pair one on the left side and the other on the right.

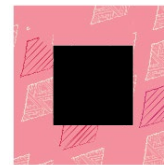


DIAGRAM 6

- Repeat the same process for Fabrics **B, C, D, E, F, G, H, J**

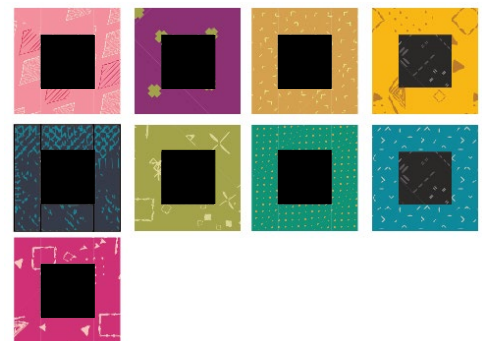


DIAGRAM 7

- Take (2) $1\frac{3}{4}$ " x $2\frac{1}{8}$ " rectangle from Fabric **A**, and (1) $1\frac{3}{4}$ " x $1\frac{3}{4}$ " from Fabric **K** and pair one rectangle on the top and one on the bottom of Fabric **K**



DIAGRAM 8

- Take (2) $2\frac{1}{8}$ " x 5" rectangles from Fabric **A** and pair one on the left side and the other on the right.

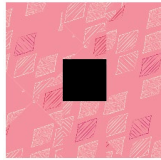


DIAGRAM 9

- Repeat the same process for Fabrics **B, C, D, E, F, G, H, J**

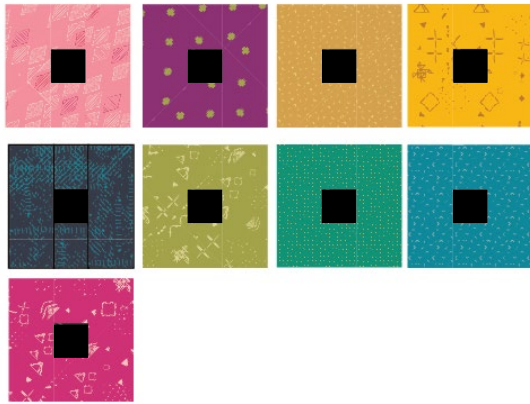


DIAGRAM 10

- Take (1) 14" x WOF from Fabric **K** and sub cut into (3) 14" x 14" square.
- Take (1) $1\frac{5}{8}$ " x WOF strip from Fabric **I** and sub cut it into (3) $1\frac{5}{8}$ " x 14" strips pairing each one with Fabric **K** them as diagram below.



DIAGRAM 11

- Cut every $1\frac{5}{8}$ " to make eighteen (18) strips.



DIAGRAM 12

- Set them aside

- Take (6) $1\frac{5}{8}$ " x 14" strips from Fabric **K** and pair (1) $1\frac{5}{8}$ " x $1\frac{5}{8}$ " square from Fabric **J** on each strip



DIAGRAM 13

- Arrange the blocks and sashing strips according to diagram 14.
- First sew the blocks and strips into rows, then sew the Fabrics **K/I** and **K/J** strips to each other into rows.
- Take the (24) $1\frac{5}{8}$ " x 14" strips from Fabric **K**, sew all rows together, making sure to align the sashing strips and blocks as shown in the cover illustration and below

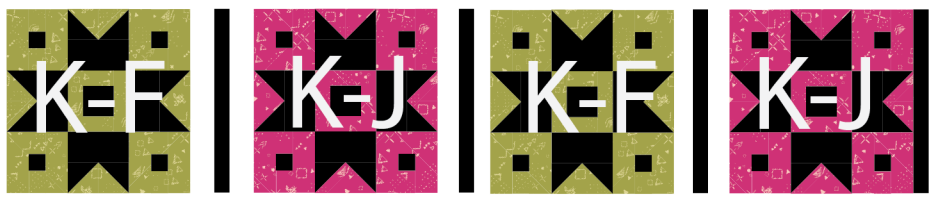
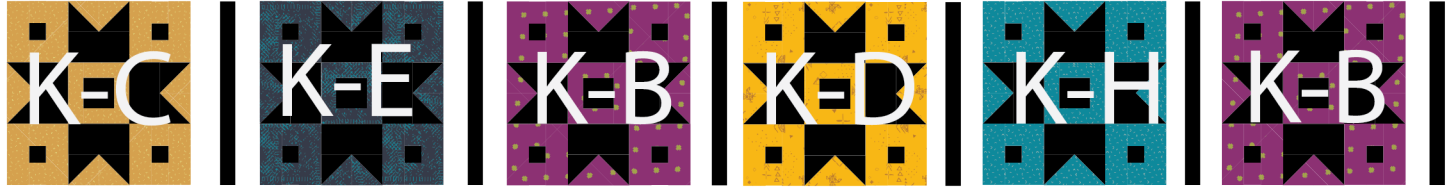
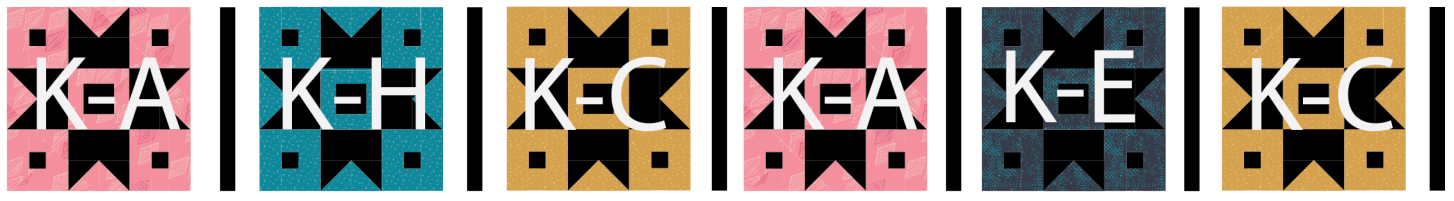
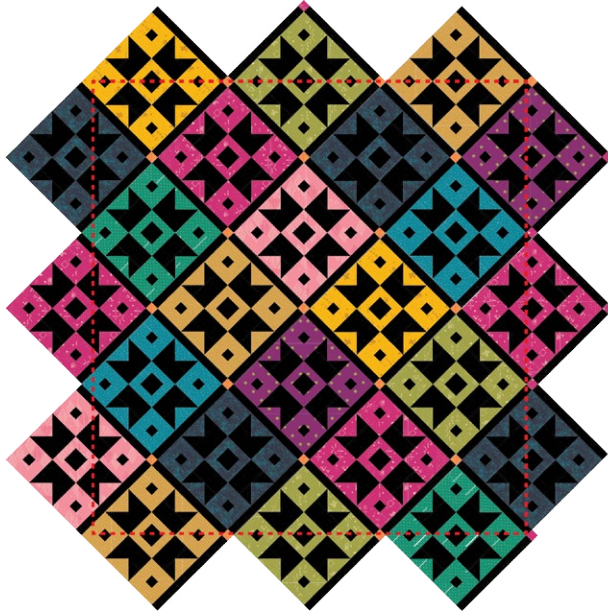


DIAGRAM 14

ASSEMBLING THE TOP

Sew all rights sides together with ¼" seam allowance. Press open.

- Press seams, rotate 45° and square off.
- Cut to 60 ½" x 60 ½" square. See diagram below



QUILT ASSEMBLY

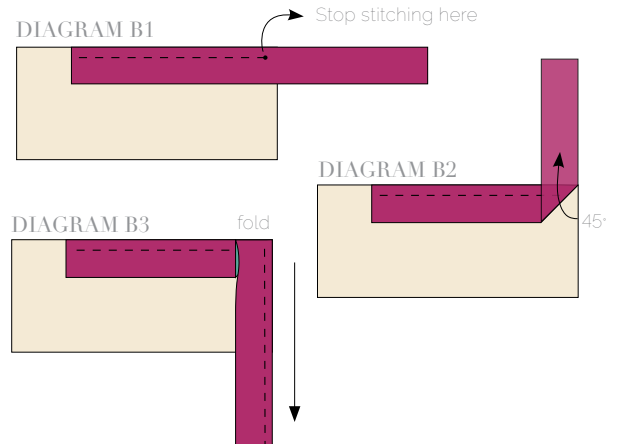
Sew rights sides together.

- Place BACKING FABRIC on a large surface wrong side up. Stretch it with masking tape against that surface.
- Place BATTING on top of backing fabric.
- Place TOP on top of the batting with right side facing up. Smooth away wrinkles using your hands.
- Pin all layers together and baste with basting thread, using long stitches. You can also use safety pins to join the layers.
- Machine or hand quilt starting at the center and working towards the corners. Remember that quilting motifs are a matter of personal preference. Have fun choosing yours!
- After you finished, trim excess of any fabric or batting, squaring the quilt to proceed to bind it.

BINDING

Sew rights sides together.

- Cut enough strips 1½" wide by the width of the fabric L to make a final strip 250" long. Start sewing the binding strip in the middle of one of the sides of the quilt, placing the strip right side down and leaving an approximated 5" tail. Sew with ¼" seam allowance (using straight stitch), aligning the strip's raw edge with the quilt top's raw edge.
- Stop stitching ¼" before the edge of the quilt (DIAGRAM B 1). Clip the threads. Remove the quilt from under the machine presser foot. Fold the strip in a motion of 45° and upward, pressing with your fingers (DIAGRAM B2). Hold this fold with your finger, bring the strip down in line with the next edge, making a horizontal fold that aligns with the top edge of the quilt (DIAGRAM B3). Start sewing at ¼" of the border, stitching all the layers. Do the same in the four corners of the quilt.
- Stop stitching before you reach the last 5 or 6 inches. Cut the threads and remove the quilt from under the machine presser foot. Lay the loose ends of the binding flat along the quilt edge, folding the ends back on themselves where they meet. Press them together to form a crease. Using this crease as the stitching line, sew the two open ends of the binding with right sides together (you can help yourself marking with a pencil if the crease is difficult to see).
- Trim seam to ¼" and press open. Complete the sewing. Turn binding to back of the quilt, turn raw edge inside and stitch by hand using blind stitch.





artgalleryfabrics.com

NOTE: While all possible care has been taken to ensure the accuracy of this pattern, We are not responsible for printing errors or the way in which individual work varies. Please read instructions carefully before starting the construction of this quilt. If desired, wash and iron your fabrics before starting to cut.

© 2018 Courtesy of Art Gallery Quilts LLC. All Rights Reserved.